

10 Reasons why your Library is AMAZING!

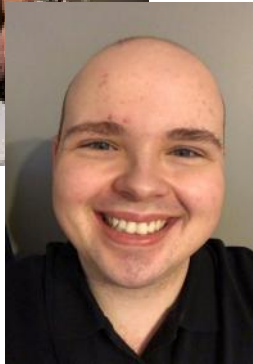
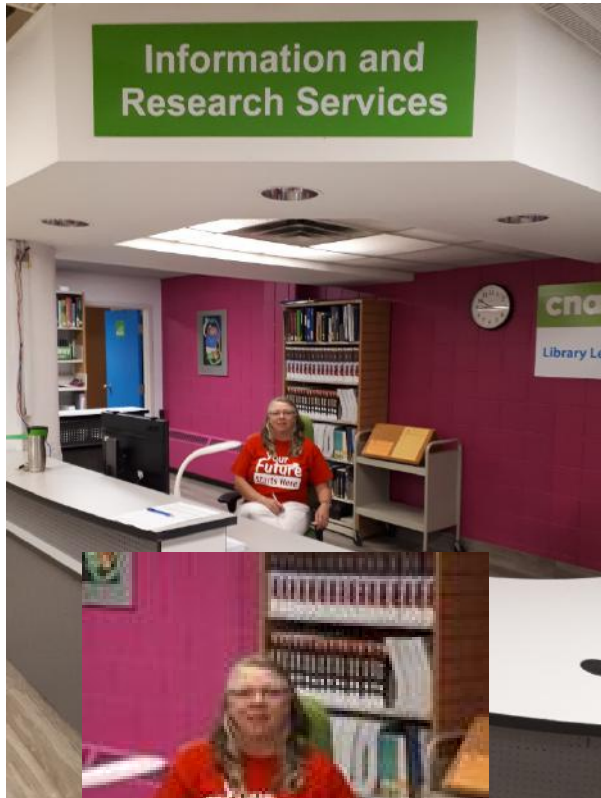


Even if you have to study at HOME!

cna

#1 The Staff

- Trained information professionals
 - Shelley Dicks, Technician
 - Matthew Evans, Clerk
- On or Off campus research assistance
 - APA citations
 - eJournal Articles
 - eBooks
- You need info? We'll find it!



#2 The Technology

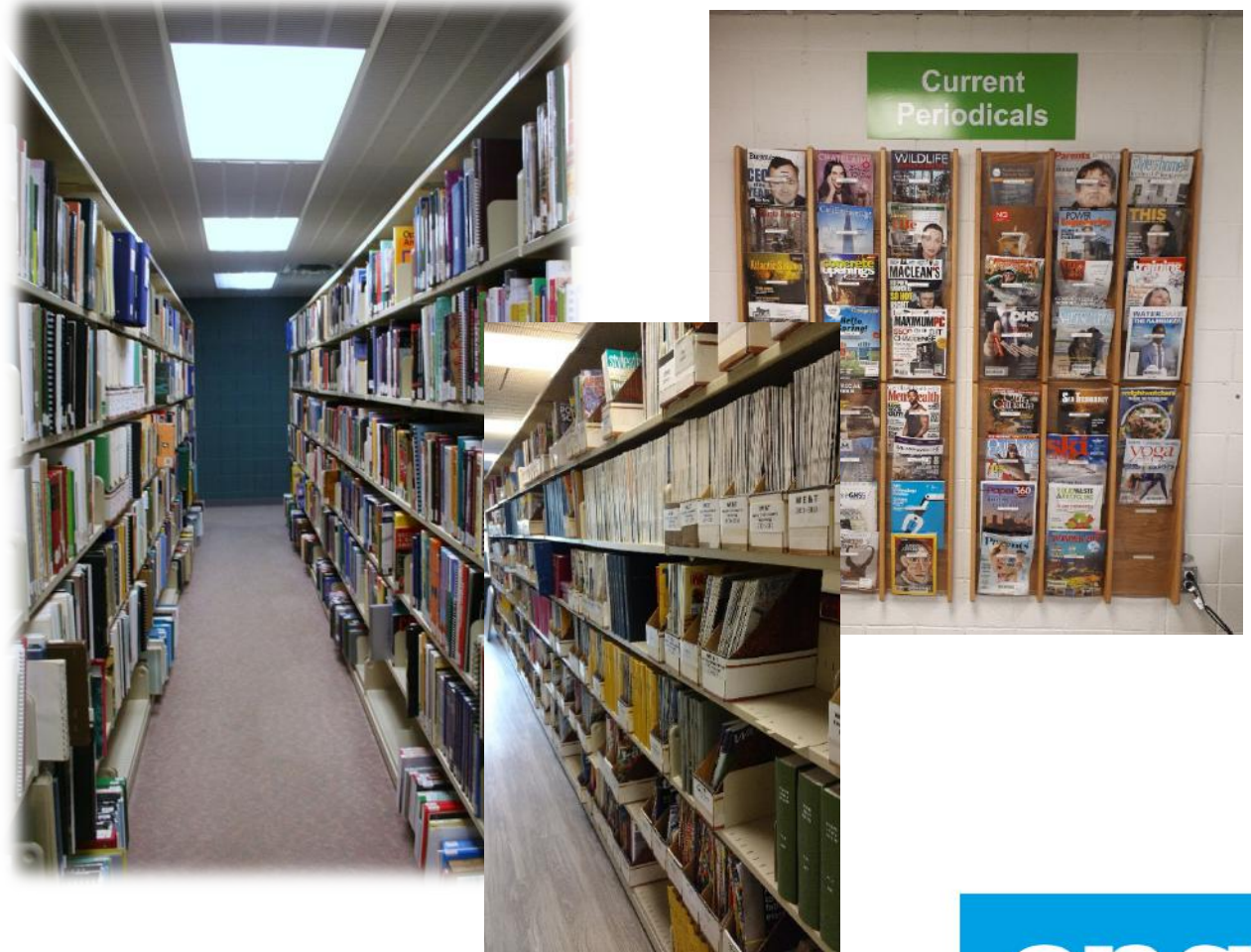
- iPads for loan
- Computer workstations
- Wi-fi
- Charging packs



Due to "Covid-19" on-campus access is limited.

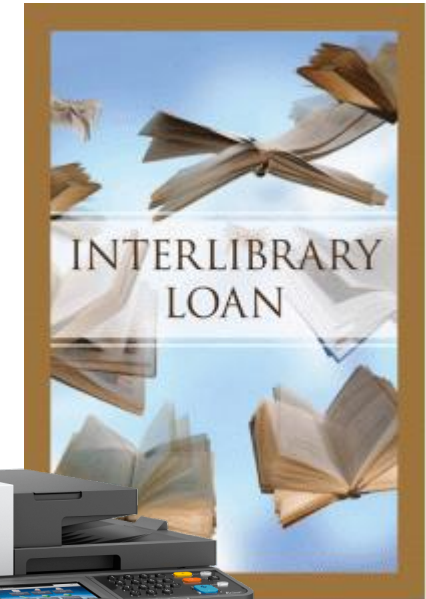
#3 The Books & Journals

- Student ID required
- Access to thousands of online journals & newspapers
- Quality academic information available in both print and online



#4 The Services

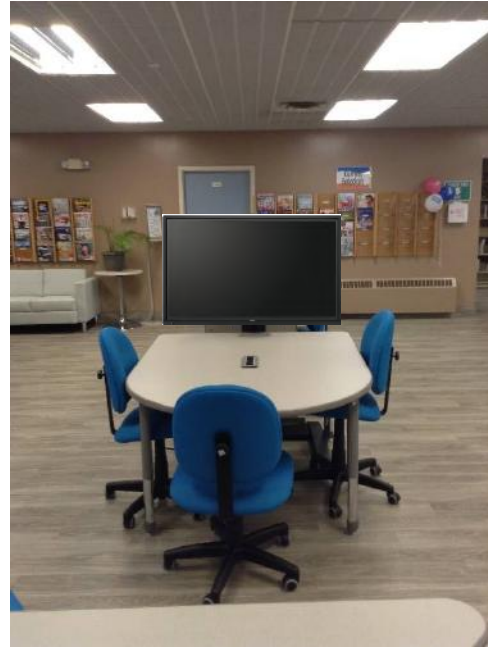
- Research assistance
- Online research guides
- Intercampus loan
- Document delivery



Due to "Covid-19" on-campus access is limited.

#5 The Collaborative Environment

- 4 huddle stations with touch screen monitors
- Group study tables
- White boards

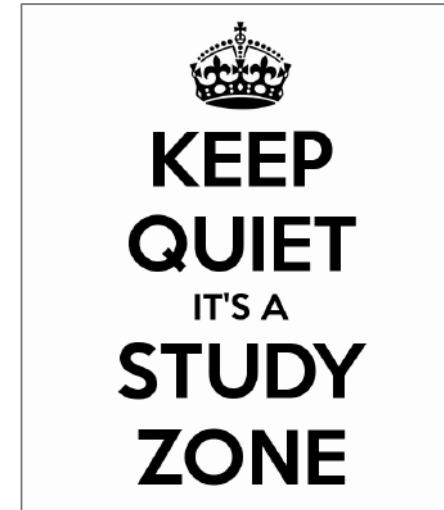


Library environment is modified based on "Covid-19" recommendations; on campus access is limited.

#6 The Quiet Study Space



- Designated quiet study carrels
 - All wired with outlets and USB plugs
- White noise



#7 The Laptop Bar and Café Tables



Library environment is modified based on "Covid-19" recommendations; on campus access is limited.

#8 The Student Meeting Room



- Smart board
- White boards
- Can be booked for 2 hour time-slots



#9 The Lounge area



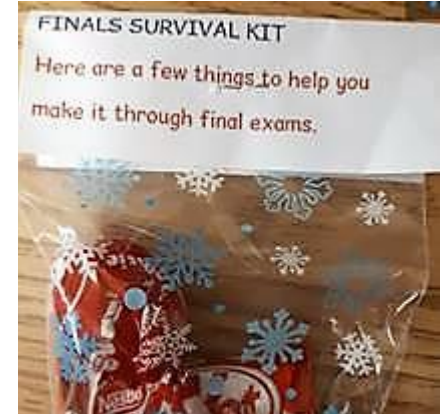
Access to...

- Academic journals
- Popular magazines
- Provincial newspapers



#10 Exam Support

- Extended hours
- Quiet study
- Coffee, tea and treats



extended hours for finals

OPEN UNTIL 10:00 PM*



*Sunday – Thursday, Dec. 11th – 18th during exams



Free coffee, tea, hot chocolate and treats every evening!



Due to "Covid-19" on-campus access is limited.

Library Access Points

“Direct”

- libcb@cna.nl.ca
- 709-637-8528

“Ask a Librarian”

- askalibrarian@cna.nl.ca
- <https://www.cna.nl.ca/MyCna/Academic-Support/Libraries.aspx>

